



# Private Sector Unlocked

How to Enter, Adapt, and Succeed



# Today's moderator



**Laura Rubio**

HR Specialist, UNAIDS

# Today's panel



**Lea Lønsted**

Head of Rewards  
Transformation, Danske  
Bank,  
Denmark



**Mian Nabeel Ahmed**

Learning and  
Development Manager,  
IFAD  
Italy



**Luisa Goldberg**

Leader, Talent Acquisition  
Center, Daimler Truck AG  
Germany

## Zoom Support Team



**Ronald Nyabadza**

Intern  
UNAIDS



**Leah Zeidler**

Assistant, Learning  
and Development  
UNAIDS

# House Keeping Rules

You are muted by default. The chat function is disabled.

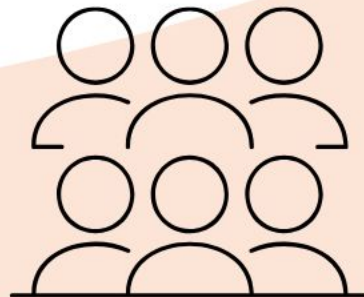
If you have any questions, please submit them through **Zoom Q&A button**.

The session will be **recorded**. The recording and presentation will be available on: [Inter-Agency Career Week 2026 webpage](#)



Due to the large number of participants in this session, we might not be able to respond to all of your questions.

**Thank you for your understanding.**



# Hearing from the Panel





Your questions

# Inter- Agency Career Week 2026 Agenda

04 - 08 May

	Monday, 04 May	Tuesday, 05 May	Wednesday, 06 May	Thursday, 07 May	Friday, 08 May
03:00-04:00 (New York) 09:00-10:00 (Europe) 10:00-11:00 (Nairobi) 14:00-15:00 (Bangkok)	Pres (E) - From the UN to the Private Sector: Skills that enable Career Transition	Pres (E) Thriving in Uncertainty	Pres (E) - Career Trend Coaching: Preparing for What's Next	Pres (E) - Habits under Pressure: working more intentionally	Pres (E) Behavioural Science for Career Development: Evidence-Based Steps for Action
04:30-05:30 (New York) 10:30-11:30 (Europe) 11:30-12:30 (Nairobi) 15:30-16:30 (Bangkok)	PD (E) - Inside the Recruiter's Mind: How Hiring Really Works in the UN and Beyond	Pres (E) - From Sat Nav to Compass: Navigating Your Career in a Changing UN System	Pres (E) - Upskilling for the Future: How to Stay Marketable Inside and Beyond the UN	Pres (E) - Becoming a UN Volunteer; What is in it for you? The Hidden Benefits of Volunteering.	PD (E) - Beyond the UN Blue: Navigating Your Career Transition to Other IGOs
06:00-07:00 (New York) 12:00-13:00 (Europe) 13:00-14:00 (Nairobi) 17:00-18:00 (Bangkok)	PD (E) - Talent on the Move: Growing your career through mobility	Clinic (F) - Recherche d'emploi optimisée par l'IA : éthique, sécurisée et tournée vers l'avenir	Clinic (E) - AI for Your Career: Practical Tools and Prompts for Career Management	Pres (E) - Leading from Within	Pres (F) - Réussir les entretiens basés sur les compétences : un guide avec des conseils pratiques pour se préparer
07:30-08:30 (New York) 13:30-14:30 (Europe) 14:30-15:30 (Nairobi) 18:30-19:30 (Bangkok)	Clinic (E) - Mapping Your Motivators for Career Choices	Pres (E) - Mapping Professional Achievements to Job Application and Interview	Pres (E) - Breaking Down Job Descriptions	Pres (E) - What remains when everything changes: A Counselling Framework for global nomad staff facing adversity and transition	Pres (E) - The skills shift: What skills-based hiring and AI agents might mean for a UN career
09:00-10:00 (New York) 15:00-16:00 (Europe) 16:00-17:00 (Nairobi) 20:00-21:00 (Bangkok)	Pres (E) - Your Career, Your Conversation	Pres (E) - Strengthening Your Adaptability Muscles - AQ: The Adaptability Quotient	Pres (E) - Managing Your Saboteurs: Removing Barriers to Your Career Growth	Pres (E) - Use Your Strengths to Boost Your Career	Pres (E) - Activating Inner Resources in Uncertain Times
10:30-11:30 (New York) 16:30-17:30 (Europe) 17:30-18:30 (Nairobi) 21:30-22:30 (Bangkok)	Pres (E) - A Mind-Blowing Tour of AI Tools to Accelerate Your Career	Pres (E) - From Sat Nav to Compass: Navigating Your Career in a Changing UN System	Pres (S) - Construye tu Asistente de Carrera con IA	Pres (E) - Building a winning profile from application to interview	Pres (E) - Mentoring 2.0: From Top-Down to All-Around
13:00-14:00 (New York) 19:00-20:00 (Europe) 20:00-21:00 (Nairobi) 00:00-01:00 <sup>-1</sup> (Bangkok)	Pres (F) - Opportunités de carrière aux Nations Unies pour les jeunes professionnels et conseils pour réussir sa candidature.	PD (E) - Thriving Globally - The human side of relocation	Pres (E) - Career Development: How you can turn a Psychosocial Hazard into a Thriving Strategy	Pres (E) - Youth Engagement: Put in Practice! (Young Talents in the UN System)	Pres (E) - Working for Justice
14:30-15:30 (New York) 20:30-21:30 (Europe) 21:30-22:30 (Nairobi) 01:30 <sup>-1</sup> -02:30 <sup>-1</sup> (Bangkok)	Pres (E) - Navigating Competency-Based Interviews: A Practical Preparation Guide	Pres (S) - Entrevistas basadas en competencias: guía práctica de preparación	Clinic (S) - Desarrollo de habilidades y redes profesionales a través de la mentoría		

